

# SONATA IN C MAJOR

## Opus 29, No. 1

**Allegro molto.**

Muzio Clementi

PIANO

*p* *f* *p*

6

*f* *p*

11

16

21

26

31

36

41

46

51

56

60

65

69

73

78

83

88

92

96

101

106

112

118

124

129

133

137

141

145

150

155

160

165

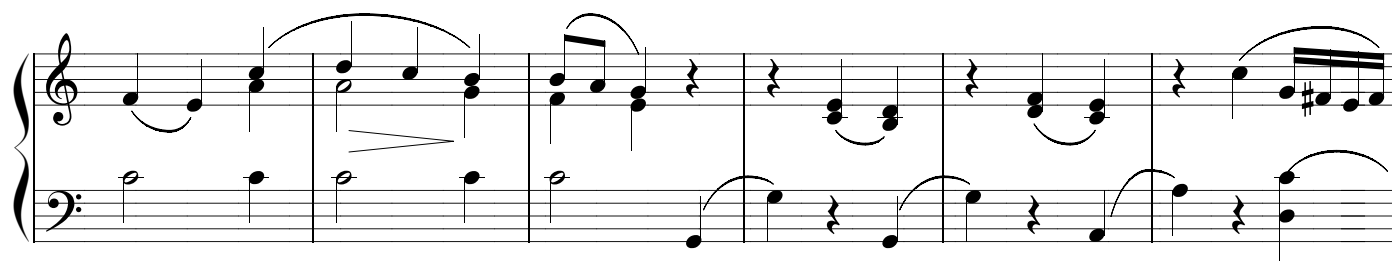
169

173

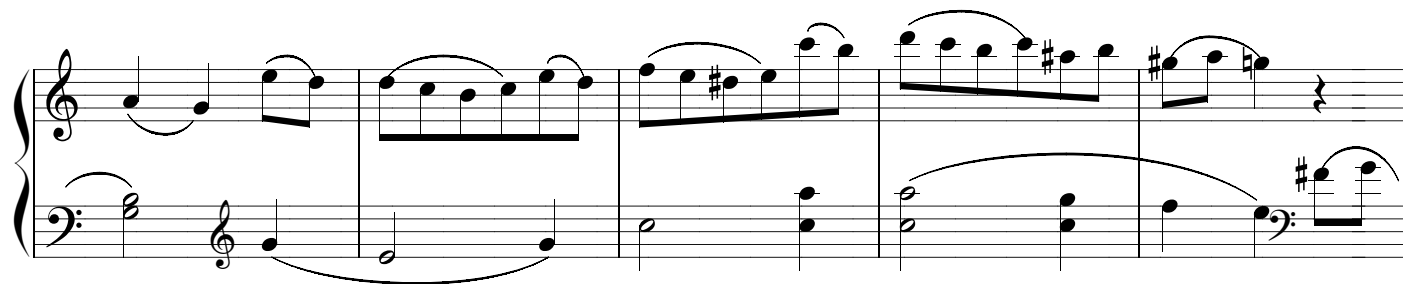
178

182

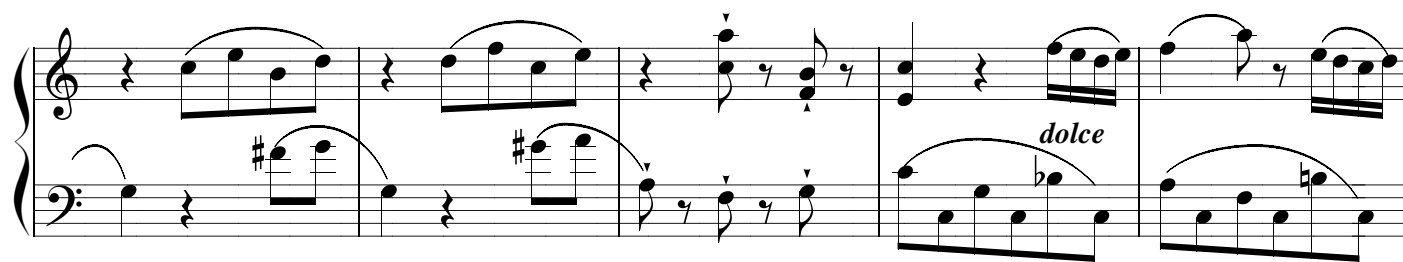




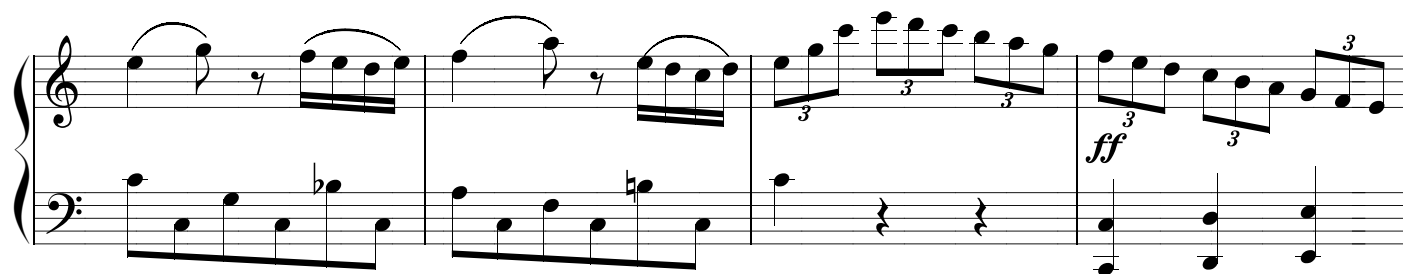
187



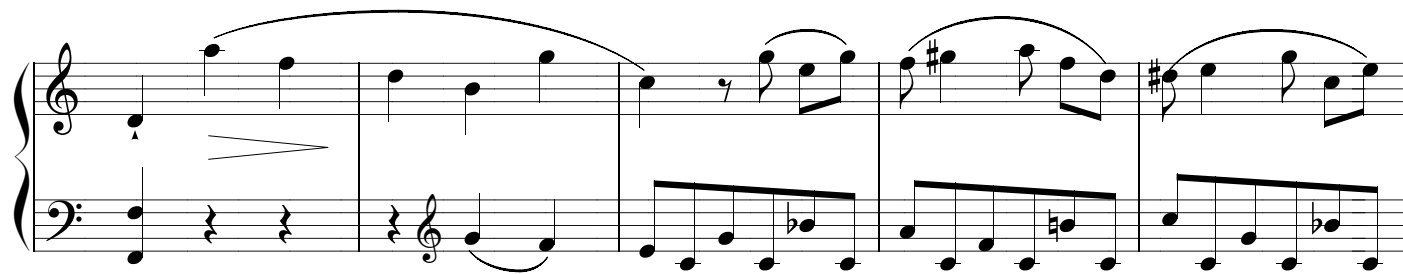
193



198



203



207

212

*cresc.* *f*

216

*cresc.* *ff*

220

*p*

224

*f* *cresc.*

229

*ff* *tr*

233

238

242

246

Measures 251-255. The right hand features a melodic line with eighth-note runs and a half-note melody. The left hand provides a steady accompaniment of eighth-note chords. Measure 254 includes a fermata over a half note.

251

Measures 256-260. The right hand continues with eighth-note runs and a half-note melody. The left hand maintains the eighth-note accompaniment. Measure 259 includes a fermata over a half note. Measure 260 features a fortissimo (*f*) dynamic.

256

Measures 261-265. The right hand features a melodic line with eighth-note runs and a half-note melody. The left hand provides a steady accompaniment of eighth-note chords. Measure 264 includes a fortissimo (*ff*) dynamic.

261

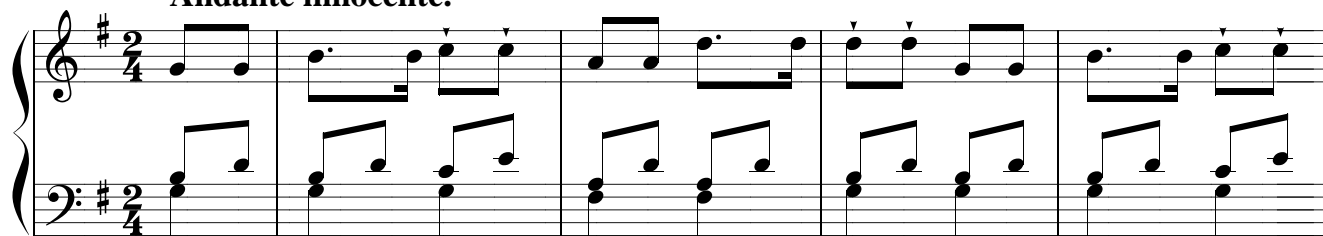
Measures 266-270. The right hand features a melodic line with eighth-note runs and a half-note melody. The left hand provides a steady accompaniment of eighth-note chords. Measure 269 includes a first ending bracket. Measure 270 includes a second ending bracket.

265

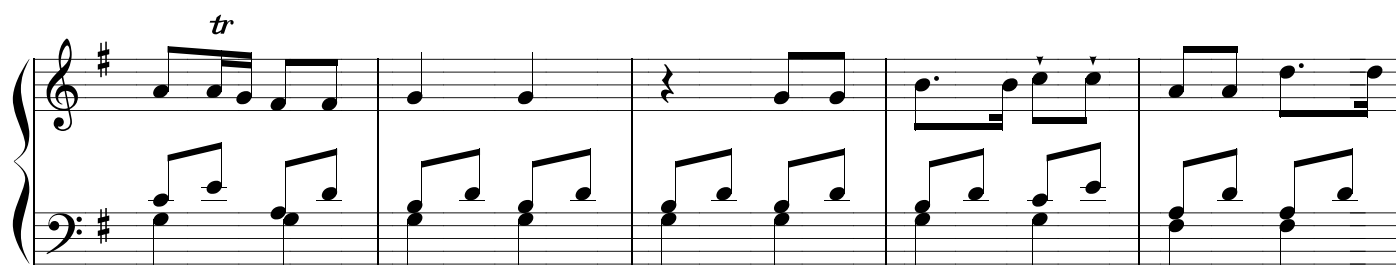
## II. Calemba

### Arietta alla Negra

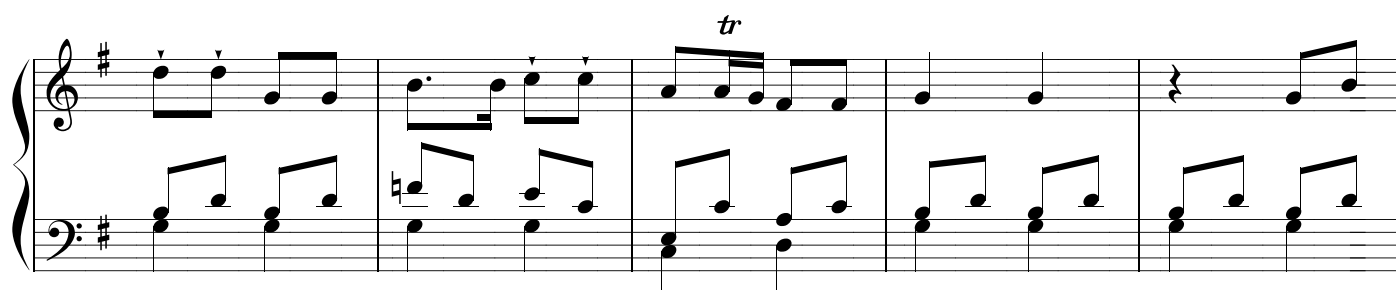
*Andante innocente.*



270



275



280



285

*tr*

290

294

*f*

298

302

*cresc. fz*

*p*

*dolce*

306

System 1 (measures 310-313): Treble and bass staves in G major. The treble staff features a continuous eighth-note melody. The bass staff provides harmonic support with chords and single notes. Measure 313 ends with a fermata on the treble staff.

310

System 2 (measures 314-317): Continuation of the melody. Measure 317 features a forte (*f*) dynamic in the treble staff.

314

System 3 (measures 318-321): Measures 318 and 319 feature a fortissimo (*fz*) dynamic. Measure 321 features a piano (*p*) dynamic.

318

System 4 (measures 322-325): Measure 322 includes a *dimin.* (diminuendo) marking. Measure 324 features a piano (*p*) dynamic. Measures 324 and 325 include sixteenth-note passages marked with a '6'.

322

System 5 (measures 326-329): Measures 326-328 feature sixteenth-note passages marked with a '6'. Measure 329 features a forte (*f*) dynamic.

326

329

332

335

338